

# High Frame Rate Superior Imaging

## PT II Series HD High-Performance Thermal Camera

The PT II series Flagship Edition Megapixel Thermal Imager incorporates a new generation of self-developed uncooled infrared focal plane detector, achieving a resolution of up to 1280×1024. Its exclusive A/M-Focus manual/automatic hybrid focusing system delivers superior image quality and enhanced operational flexibility. The PT II Series has undergone comprehensive upgrades in hardware configuration, software systems, and user experience, aiming to establish a new industry benchmark.



### 1-lens TwinView DFOV

IR single-lens dual-field design: 1s wide/narrow switch, no lens change for long-range inspection and close-range measurement, efficient for complex scenarios.



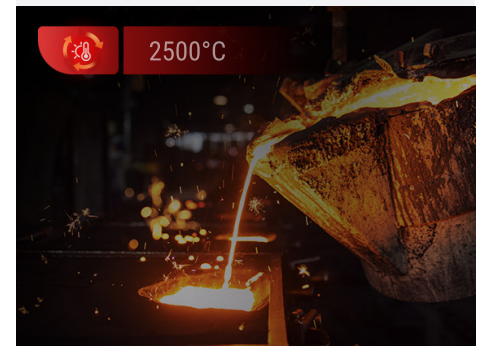
### Charges to 90% in 1 Hour

Equipped with advanced fast charging tech, it takes just 1 hour to charge the battery to 90%, significantly cutting waiting time and meeting urgent - use needs efficiently.



### Up to 2500°C Temperature Range

Up to 2500°C for metallurgy/furnace applications, preventing overheating with reliable protection.



### 50Hz Frame Rate

50Hz infrared frame rate enables real-time dynamic imaging, smoothly capturing rapid temperature changes; ideal for industrial inspection and scientific analysis, ensuring precise response and data synchronization.

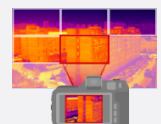


### 5 Fast Focus Modes

Supporting 5 focusing modes and a quick-focus system, it presents clearer images, saving time and enabling more precise temperature measurements.



### Super-resolution



### PerIRVision panoramic stitching



### 5.5-inch Multi-touch Screen

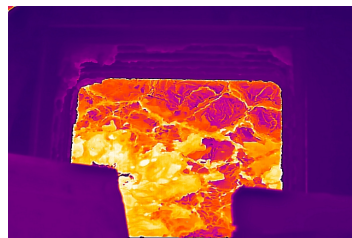


### OTA Upgrade

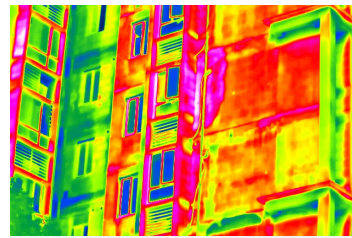
# Applications



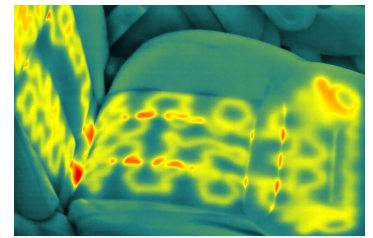
Power Industry



Industrial Inspection



Construction Industry







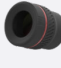

Scientific Analysis

## Standard Package

 Device	 Lithium battery×2	 Desktop charger	 Power adapter	 Adapter plugs
 USB-A to USB-C Cable	 USB-C to USB-C Cable	 Micro HDMI to HDMI Cable	 USB-C to Ethernet Adapter	 Ethernet Cable
 SD Card (128GB)	 Shoulder Strap	 Wrist Strap	 Carrying bag	 Safety Box

- Quick Start Guide
- Inspection Report
- Calibration Certificate
- Warranty Card

## ADD-ON LENSES

 Telephoto Lens (7°)	 Wide-angle Lens (44°)
 Standard Lens (25°)	 Macro Lens
 High-temperature Lens	 TwinView DFOV Lens

## Specifications

Model		PT870S
Imaging and Optics	IR Resolution	1280×1024
	Super resolution	2560×2048
	NETD	≤15mK
	Image Frequency	50Hz/9Hz
	Field of View (FOV)	45°, 25°, 15°, 7°, TwinView DFOV (25°+15° / 25°+45°), High-temperature, 3X Macro
	Spatial Resolution(IFOV)	45°:19.5mm; 25°:35mm; 15°:58mm; 7°:133mm
Image Display	Digital Camera	8MP + 16MP, Autofocus
	Display	1920×1080 Resolution, 5.5" LCD Screen
Measurement and Analysis	Object Temperature Range	-40°C to 150°C, 0°C to 800°C. Expandable: 400°C to 2500°C.
	Accuracy	±1°C or ±1%, whichever is greater (with temperature limitation)±2°C or ±2%, whichever is greater (others)
Weight	Image and Video Formats	Radiometric JPEG, MP4 Video, Radiometric Video
	Wi-Fi/GPS & Compass	802.11 b/g/n (2.4 GHz and 5 GHz)/Yes
	HDMI Interface	Yes
	Battery Operating Time	3.5 hours
	Weight	1.78kg (with standard lens and battery)

## Software



PC Software – ThermoTools  
(Windows)



Mobile App –FocusIR  
(Android/iOS)

\* Product performance is based on testing in a controlled laboratory environment. Your test results may vary due to several external and environmental factors. All specifications are subject to the actual product. The manufacturer reserves the right to modify technical specifications without notice or liability to you.