



50Hz - Unprecedented real-time temperature data update speed

Hammer II Series Intelligent Thermal Camera

Hammer II Series – High-Precision Hammer-Style Infrared Camera is specifically designed for industrial inspections and electrical grid maintenance. Equipped with a proprietary self-developed high-sensitivity detector (NETD<15mK), its 50Hz high frame rate and wide temperature measurement range ensure precise capture of abnormal heating points. Equipped with a single-lens dual-FOV design, it instantly switches between wide-angle and narrow-angle views without lens changes. This enables seamless adaptation to complex scenarios, efficiently handling both long-distance inspections and close-range temperature measurements.

APEX VISION

Single-Lens Dual-FOV (25°+15°、25°+45°)

The single-lens dual-FOV design enables instant switching between wide-angle and narrow-angle views. Without lens changes, it handles both long-distance inspections and close-range temperature measurements, enhancing efficiency in complex scenarios.



Fast charging to 90% in 1 hour

Equipped with advanced fast-charging technology, it reaches 90% battery capacity in just 1 hour, significantly reducing downtime and efficiently meeting urgent operational needs.



Single-Lens Wide Measurement Range (-40°C~2000°C)

A single lens covers -40°C to 2000°C, enabling precise monitoring of ultra-low-temperature condensation and high-temperature smelting processes. Ideal for metallurgical and power industry applications, this solution reduces downtime and operational costs.



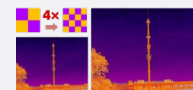
50Hz Frame Rate

With 50Hz high frame rate real-time imaging, the system accurately captures rapid temperature changes. This performance makes it suitable for industrial inspections and scientific analysis.

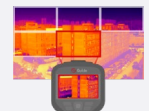


5 Focus Modes

Laser-assisted AF / Continuous AF / Autofocus / Manual Focus / Touch-to-Focus - optimizing image clarity and measurement accuracy.



Super-Resolution



PerIRVision



4 Dimming Methods

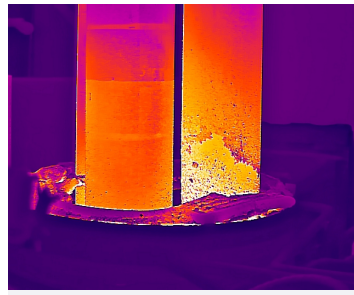


OTA Upgrade

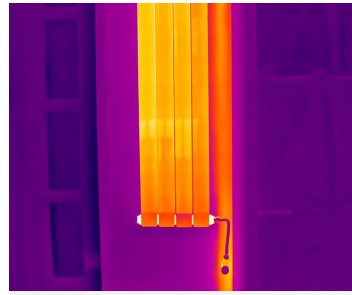
Applications



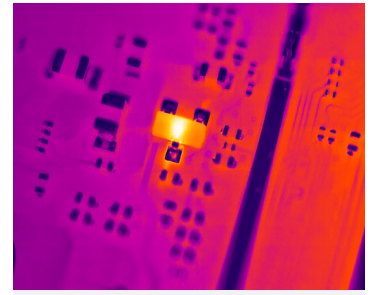
Electrical Maintenance



Industrial Inspection



Heating System Inspection

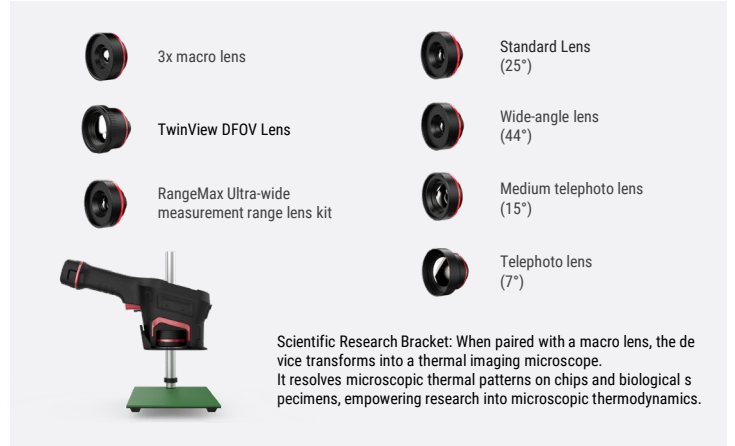


PCB

Standard Package



ADD-ON LENSES



Specifications

Model		H3+S
Imaging and Optics	IR Resolution	384×288
	Super resolution	768×576
	NETD	15mK
	Image Frequency	50Hz/9Hz
	Field of View (FOV)	44°, 25°, 15°, 7°, TwinView DFOV (25°+15°/25°+45°), RangeMax Ultra-wide Kit (25°/15°/7°), 3X Macro
	Spatial Resolution(IFOV)	44°:6mm; 25°:10.5mm; 15°:17.7mm; 7°:37.5mm
	Lens Calibration	Calibration – Free Recognition (Limited lens support)
Image Display	Digital Camera	8MP
	Display	800×480 Resolution, 4.3" LCD Screen
	Digital Zoom	1-10x continuous
	Annotations	Annotated Collection, Text(supports preset text), Voice(200s), Doodle, Visible Light Image
Measurement and Analysis	Object Temperature Range	-40°C to 150°C, 0°C to 650°C, 500°C~2000°C (RangeMax Ultra-wide measurement range lens kit), Auto
	Accuracy	±2°C or 2%, whichever is greater (23°C±5°C ambient)
General	Image Format	Radiometric JPEG, MP4 Video, Radiometric Video
	Wi-Fi/GPS & Compass	802.11 b/g/n (2.4 GHz and 5 GHz) /Yes
	Battery Operating Time	5 hours
	Battery Type& Charging Time	Fast-charging, Lithium-ion battery, 1 h to 90% capacity(@0~45°C)
	Weight	≤1.24kg (Including standard lens and battery)

Software



PC Software – ThermoTools
(Windows)



Mobile App –FocusIR
(Android/iOS)

* Product performance is based on testing in a controlled laboratory environment. Your test results may vary due to several external and environmental factors. All specifications are subject to the actual product. The manufacturer reserves the right to modify technical specifications without notice or liability to you.