



**APEX  
VISION**

# Thermal

**3.5-inch super large screen,  
extra long battery life for  
peace of mind**

**EasIR Max Series** Tool-like Thermal camera

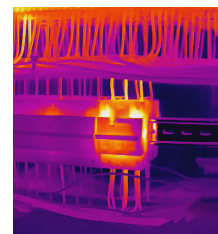
## Introduction

EasIR Max Series offers high-resolution detectors (256×192 or 384×288) for precise capture of minute temperature variations. Featuring IR-Perfclear technology, it optimizes image details and reduces noise in real time, delivering exceptionally clear thermal imaging. The device is equipped with a 3.5-inch bright HD display and a 2 MP visible-light camera, supporting both synchronous display or image fusion of thermal and visible-light. Enhanced with smart capabilities including live video streaming, recording, Wi-Fi connectivity, and OTA upgrades, it significantly boosts work efficiency.

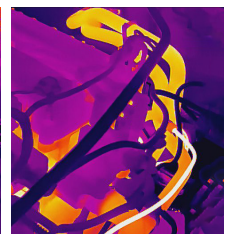
## Features

- Next-gen infrared imaging system APEXVISION for ultra-clarity & precision
- High-sensitive infrared detector, resolution 256×192/ 384×288
- Real-time IR-Perfclear technology, 4 times better image quality
- -20°C~550°C wide temperature measurement range, automatic switch
- Photo and video recording, convenient sharing via mobile APP
- Video streaming, real-time data transmission with PC analysis software
- OTA firmware upgrade to keep the device up-to-date

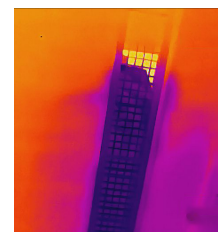
## Applications



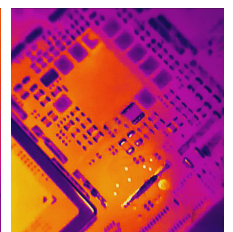
Electrical Application



Facilities maintenance



HVAC Inspection



PCBA detection

## Specifications

Product model	E3S	E4S
<b>Imaging and optics</b>		
Core Technology Item	Equipped with full ApexVision S1 system architecture: Detector ApexCore S1 + Platform Nexus 1.0 + Algorithm SharpIR 2.0	
Detector type	VOx, 7.5 to 14μm	
Infrared resolution	256×192@12μm	384×288@12μm
Super resolution	Support real-time super-resolution reconstruction, Upgrade to 512×384	Support real-time super-resolution reconstruction, Upgrade to 768×576
NETD	15mK	
Frame rate	30Hz/9Hz	
Focal length	3.2mm	7mm
Field of view	56°×42°	38°×28°
IFOV	3.82mrad	1.73mrad
Min. object distance	0.3m	
D:S	262:1	578:1
Focusing mode	Focus-free	
<b>Measurement and analysis</b>		
Measurement range	Support auto-switching: -20°C to 150°C, 0°C to 550°C	Support auto-switching: -20°C to 150°C, 0°C to 650°C
Measurement accuracy	±2°C or ±2%, whichever is greater	
Analyzed target	Center spot; Three Fixed Areas: Small, Medium, Large (Alternative)	
Alarm	Full screen temperature threshold alarm (Image and Flash)	
<b>Image display</b>		
Display screen	3.5" LCD, 640×480	
Image mode	IR, VIS, MIF, PIP	
Color palettes	6: Iron Red, White Hot, Arctic, Rainbow 2, Hot Iron, Rainbow 1	
Image adjustment	Level span mode: Automatic, Semi-automatic, Manual	
Digital camera	2MP	
<b>Functions</b>		
Laser	Laser Indication	
Recording function	Photo and Video	
Others	OTA update	
<b>Storage and transmission</b>		
Storage media	Built-in (32 GB)	
Image storage	JPG with temp info	
Video storage	Supports real-time video streaming, video storage format in Irgd (with temp info)	
External interface	USB-C, Tripod socket	
Wi-Fi	Yes, it can be connected to the mobile terminal for image and real-time video transmission	
<b>Power system</b>		
Battery type	Rechargeable lithium-ion battery, non-removable	
Operating time	12 hours	10 hours
<b>Environmental parameters</b>		
Working temperature	-15°C to 50°C	
IP rating	IP54	
Drop	2m drop test	
<b>Physical parameters</b>		
Hardware	Wi-Fi, Illuminator	
Weight	440g	460g
Size	227×81×77.5mm	
Software kit	PC: ThermoTools; Mobile: FocusIR (iOS/Android)	
Standard	A device, Wrist strap, Carrying bag, Power adapter, Adapter plug, USB-A to USB-C cable, Quick Start Guide, Warranty card	
Options	Macro lenses (10x/5x), Tripod	

\* Product performance is based on testing in a controlled laboratory environment. Your test results may vary due to several external and environmental factors. All specifications are subject to the actual product. The manufacturer reserves the right to modify technical specifications without notice or liability to you.