

U1240 Series

Handheld digital multimeters

Introduction

For technicians or industrial test engineers, your ultimate goal is to keep the production line running seamlessly to prevent any unplanned shutdown. The strong and solid Keysight Technologies, Inc. U1240B and U1240C Series are just the DMMs you need to work efficiently on the bench or in the field. Certified to IP 67 and with the durability to withstand drops up to 10 feet (3 meters) to suit harsh working environments, the U1240C can work longer for you with up to 400 hours of battery life. Better yet, you can optimize productivity with the unique remote data logging functionality via USB. Perform tests confidently and efficiently — everything you need to get the job done.



Key Features

- 10,000-count display
- Up to 0.09% basic DCV accuracy
- Longer battery life up to 400 hours ¹
- Certified to IP 67 for water and dust protection ¹
- Tested to withstand a 3-meter (10-ft) drop ¹ – CAT III 1000 V / CAT IV 600 V overvoltage protection
- Special features:
 - Harmonic ratio measurement to quickly identify the presence of harmonics in AC signals
 - Z_{LOW}, low impedance mode ² to eliminate false readings caused by stray voltages
 - Vsense ² for non-contact voltage detection
 - T1 – T2 differential temperature ² measurement
 - Built-in flashlight ³

Test Confidently and Efficiently

Harmonics ratio

In real life, harmonics are present in AC power due to the fact that many electronic devices are powered by switched-mode current pulses which travel back into the power source. If these unwanted harmonics become too large, the undesirable side effects include overheating that shortens the lifespan of motors, generators, and transformers, premature tripping of circuit breakers, and blown fuses. One of the fastest ways to detect and gauge the percentage of distortion due to harmonics is by measuring the harmonic ratio of the incoming AC voltage. You can perform this very easily on the U1242B/C handheld DMM, with just a button press. The percentage helps you to decide if further analysis of the power source is required with an oscilloscope or a spectrum analyzer.

Low impedance mode (Z_{low})

Stray voltages are usually encountered in non-energized electrical wiring adjacent to powered wires due to capacitive or inductive coupling between these wires. The low impedance mode helps to reduce false readings by dissipating these stray voltages, thus improving safety and measurement efficiency during voltage measurement.

Vsense for non-contact voltage detection

Vsense is a unique method of non-contact voltage detection that safeguards users from exposure to hot or live wires while making measurements in dangerous working environments. Upon detection of high AC voltage, it produces a unique combination of beeping audio and blinking LED lights to alert users.

¹ U1240C Series only

² U1242C Only

³ U1242B & U1242C only

Dual and differential temperature

In the installation, maintenance, and troubleshooting of heating, ventilation, and air-conditioning (HVAC) systems, temperature measurements are essential. As an example, to ensure boiler temperature adheres to safety requirements, you would need to measure both boiler and air temperature simultaneously to achieve accurate real-time readings. With a faulty air conditioning system, viewing the temperature difference between the warm return air and cool air supply helps to reveal the cooling behavior of the evaporator with respect to time. Now with the convenience of the U1242B/C DMM, you need only one instrument to efficiently get dual and differential measurements.

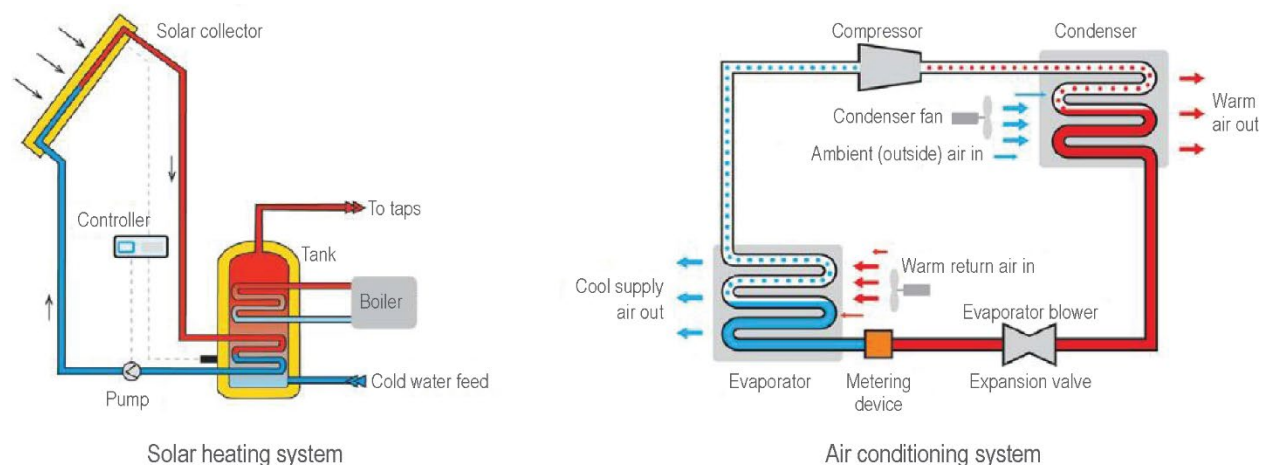


Figure 1. Dual and differential temperature for efficient testing of HVAC systems

Built-in flashlight with ergonomics in mind

Designed for handheld users working in poorly lit environments, the U1240C Series fits comfortably in your palm, allowing you to single-handedly illuminate the test area with its easily activated built-in LED flashlight. With ergonomics in mind, you can swiftly make more measurements without straining your hands even over a longer period of time.



Figure 2. Ergonomically shaped with a built-in flashlight

Prolonged battery life and rugged build

The last thing you want is for your tools to run out of juice when you need it the most. The U1240C Series of handheld DMMs lets you carry out tests and measurements over a prolonged duration. With up to 400 hours of battery life, you don't have to worry about the hassles of battery change and just focus on maximum productivity.

When operating in harsh environments, you need tools that are strong and solid enough to stand up to the task. The U1240C Series DMMs are housed in robust overmolded enclosures and certified to IP 67 for dust and water resistance. Better yet, it is also designed to absorb the impact of a 3-meter (10-foot) drop — especially useful in case of accidental drops during installation and maintenance work.

Perform data logging on-DMM, wired or wirelessly

Keep the production lines running smoothly with the U1240 Series DMMs' data logging capabilities. Users have two options to record individual readings. The first option is to simply record data into the main DMM unit by utilizing the built-in internal memory of up to 2,000 readings storage. The second option is to transmit data to a PC with the IR-USB cable utilizing the Keysight Handheld Meter Logger software. With this capability, you can ensure every reading gets recorded accurately at intervals you specify. Better yet, you can eliminate the conventional data entering process and generate error-free automated test reports in various forms such as a graph, table, and statistical information or limit test results.



Figure 3. Easily capture test readings with the Keysight Handheld Meter Logger software

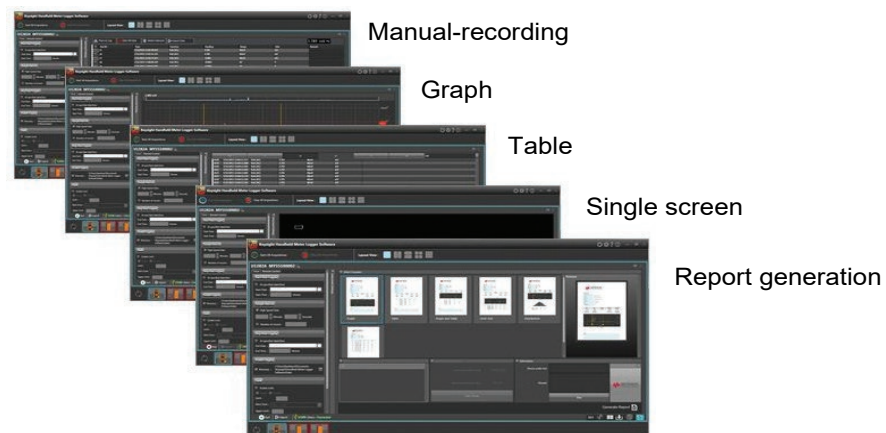
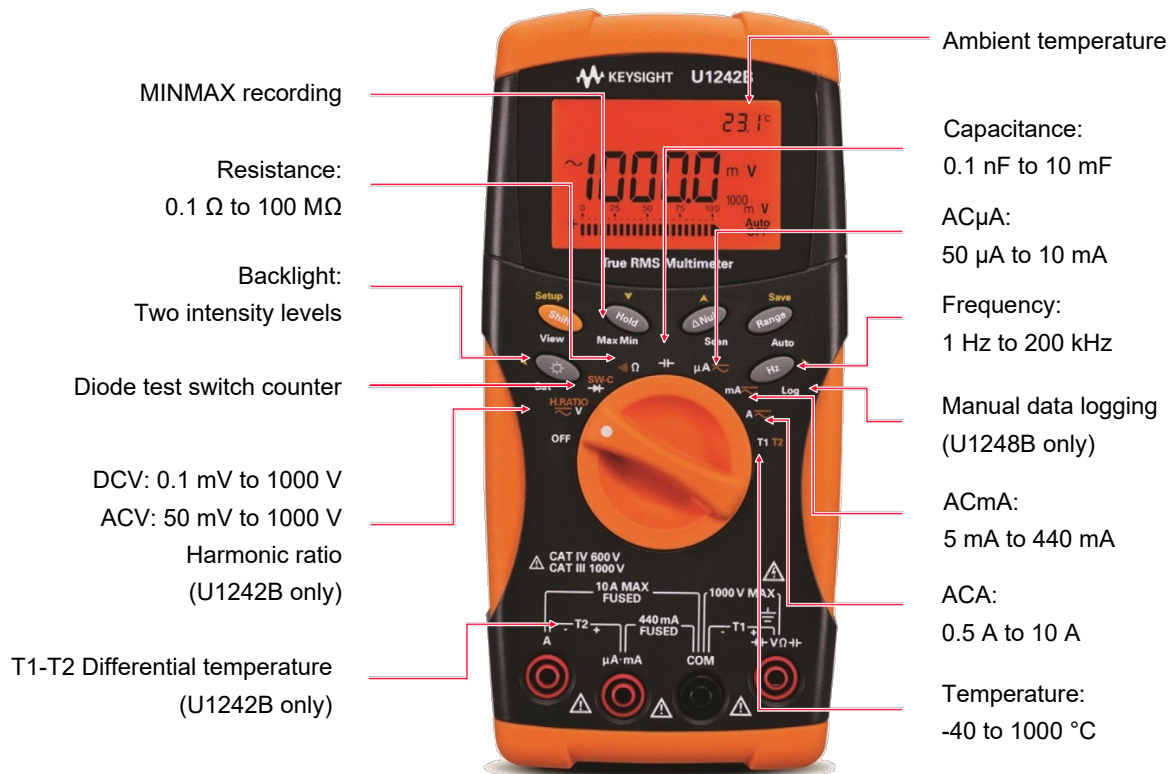


Figure 4. Get automatic report generated in various formats via PDF

Take a Closer Look at the U1240B Series

Front panel



Take a Closer Look at the U1240C Series

Front panel



*U1242C only

Back panel



Ergonomically designed for better grip

U1240C Series Comparison

Basic features		U1241C	U1242C
Display resolution		10, 000	10, 000
Auto/manual ranging		Yes	Yes
Analog bar graph		Yes	Yes
Backlight		Yes	Yes
AC bandwidth		2 kHz	2 kHz
True RMS		AC	AC (Switchable to averaging sense)
Measurements			
Voltage DC	Range	100 mV to 1000 V	100 mV to 1000 V
	Accuracy	0.09% + 2 cnts	0.09% + 2 cnts
Voltage AC	Range	100 mV to 1000 V	100 mV to 1000 V
	Accuracy	1.0% + 3 cnts	1.0% + 3 cnts
Current DC	Range	1000 μ A to 10 A	1000 μ A to 10 A
	Accuracy	0.1% + 2 cnts	0.1% + 2 cnts
Current AC	Range	1000 μ A to 10 A	1000 μ A to 10 A
	Accuracy	1% + 3 cnts	1% + 3 cnts
Resistance	Range	1000 Ω to 100 M Ω	100 Ω to 100 M Ω
	Accuracy	0.2% + 2 cnts	0.2% + 2 cnts
Frequency	Range	100 Hz to 10 MHz	100 Hz to 10 MHz
	Accuracy	0.02% + 1 cnts	0.02% + 1 cnts
Capacitance	Range	1000 nF to 10 mF	1000 nF to 10 mF
	Accuracy	1% + 5 cnts	1% + 5 cnts
Temperature (K-type thermocouple)	Range	-200 °C to 1372 °C	-200 °C to 1372 °C
	Accuracy	1% + 1 °C	1% + 1 °C
Continuity with beeper		Yes	Yes
Diode test		Yes	Yes
Data management			
Min/Max recording		Yes	Yes
Display hold		Yes	Yes
Auto hold		Yes	Yes
Null		Yes	Yes
PC-Connectivity		Infrared (IR)-USB	Infrared (IR)-USB
Special features			
Harmonic ratio		—	Yes
Vsense: non-contact voltage detection		—	Yes
Z _{LOW} - low impedance mode		—	Yes
T1 - T2 differential temperature measurement		—	Yes
Safety and regulatory			
Over-voltage safety protection		CAT III 1000 V / CAT IV 600 V	CAT III 1000 V / CAT IV 600 V
General			
Operating temperature		-20 °C to 55 °C 0% to 80% R.H.	-20 °C to 55 °C 0% to 80% R.H.
Battery (included)		4 x 1.5 V AAA	4 x 1.5 V AAA
Battery life		400 hours	400 hours
Warranty		3-year	3-year
Calibration		One year, or Two years (with 1.5 times of one year specification)	One year, or Two years (with 1.5 times of one year specification)
Dimensions (H x W x D)		198 x 96 x 57 mm	198 x 96 x 57 mm

U1240C Series General Specifications

General specifications	U1240C
Display	4 ½-digit Liquid Crystal Display (LCD) with maximum reading of 11,000-count Automatic polarity indication
Power consumption	530 mVA maximum with backlight and flashlight.
Battery type	4x 1.5 V AA alkaline batteries (ANSI/NEDA 24A or IEC LR03), or; 4x 1.5 V AA zinc chloride batteries (ANSI/NEDA 24D or IEC R03), or; 4x 1.5 V AA lithium batteries (ANSI/NEDA 24-LF or IEC FR03)
Battery life	400 hours typical based on new alkaline batteries for DC voltage measurement
Connectivity	Infrared (IR) port, connect with IR-USB cable
Fuse	10 x 35 mm, 440 mA / 1000 V, 10 kA minimum fast-acting fuse 10 x 38 mm, 11 A / 1000 V, 20 kA minimum fast-acting fuse
Operating environment	Full accuracy from -20 °C to 55 °C; and up to 80% R.H. for temperature up to 30 °C decreasing linearly to 50% R.H. at 55 °C Pollution degree II Altitude up to 3000 meters
Storage compliance	-40 °C to 70 °C, 0 to 80% R. H. (with battery removed)
Safety compliance	Refer to Declaration of Conformity for the latest revisions of regulatory compliance at www.keysight.com/go/conformity
Measurement category	CAT III 1000 V / CAT IV 600 V
Electromagnetic Compatibility (EMC)	Refer to Declaration of Conformity for the latest revisions of regulatory compliance at: www.keysight.com/go/conformity Commercial limits compliance with EN61326-1 Influence of radiated immunity: In RF electromagnetic fields of 3 V/M DC voltage measurement typical accuracy: 100 mV & 600 mV range; $\pm 0.1\%$ of range DC current measurement typical accuracy: 1000 μ A & 10 mA range; $\pm 0.3\%$ of range 10 A range; $\pm 0.7\%$ of range Note: If used in close proximity to an RF transmitter or when subjected to continuously present electromagnetic phenomena, some recoverable degradation of performance may occur.
Ingress protection rating	IP-67, protected against dust and the effect of immersion between 15 cm and 1 m
Temperature coefficient	0.05 x (specified accuracy)/°C (from -20 °C to 18 °C or 28 °C to 55 °C)
Common Mode Rejection Ratio (CMRR)	> 120 dB at DC, 50/60 Hz $\pm 0.1\%$ (1 k Ω unbalanced)
Normal Mode Rejection Ratio (NMRR)	> 60 dB at 50/60 Hz $\pm 0.1\%$
Dimensions (H x W x D)	198 x 96 x 57 mm
Weight	545 grams (with batteries)
Warranty	Three years for main unit. Three months for standard shipped accessories
Calibration cycle	One year, or; Two years (with 1.5 times of one year specification)
Specification assumptions	
<ol style="list-style-type: none"> 1. Accuracy is given as \pm (% of reading + counts of least significant digit) at 23 °C ± 5 °C, with relative humidity less than 80% R.H. 2. Accuracy is specified for 1-year after calibration, at operating temperature of room temperature. Multiply 1.5 times of the accuracy for 2-year after calibration, example \pm (1.5 x% of reading + 1.5 x counts of least significant digit). 3. AC V/mV and AC μA/mA/A specifications are AC coupled. 4. True RMS measurement is valid from 5% of range to 100% of range. 5. For non-sinusoidal waveforms, add (0.5% of reading + 0.3% of full scale) typically 6. Crest factor ≤ 3 at full-scale and decrease reciprocally for overrange as 3\times Full Scale/Input; except for the 100 mV, 600 mV and 1000 V ranges, where these ranges have crest factor ≤ 1.5 at full scale and decrease reciprocally for overrange as 1.5\times Full Scale/Input. – Specification is based on 5 times/second of data refresh rate 7. After Z_{LOW} voltage measurement, wait for at least 20 minutes to cool down thermal impact before making next measurement. 8. CMRR and NMRR are based on 5 times/second of data refresh rate 	

U1240C Series DC specifications

Function	Range	Resolution	Accuracy \pm (% of reading + counts of least significant digit)	Test current / burden voltage
Voltage	100 mV ^{1,3}	0.01 mV	0.09% + 2	—
	600 mV ^{1,3}	0.1 mV	0.09% + 2	—
	1000 mV ⁴	0.1 mV	0.09% + 2	—
	10 V ⁴	0.001 V	0.09% + 2	—
	100 V ⁴	0.01 V	0.09% + 2	—
	1000 V ⁴	0.1 V	0.09% + 2	—
	Z _{LOW} ^{2,4} (applicable to 1000 V range)	0.1 V	1% + 4	—
Current ⁵	1000 μ A ³	0.1 μ A	0.1% + 2	0.032 V (30 Ω)
	10 mA ³	0.001 mA	0.1% + 2	0.32 V (30 Ω)
	100 mA ^{1,3}	0.01 mA	0.2% + 2	0.2 V (0.5 Ω)
	600 mA ^{1,3}	0.1 mA	0.2% + 2	0.88 V (0.5 Ω)
	10 A ^{2,4}	0.001 A	0.3% + 5	0.5 V (0.01 Ω)
Diode test	—	0.001 V	0.5% + 10	< 1.6 mA

Function	Range	Resolution	Accuracy \pm (% of reading + counts of least significant digit)	Continuity threshold
Resistance / audible continuity	100 Ω ^{3,4,7}	0.01 Ω	0.2% + 5	28 \pm 10 Ω
	1000 Ω ⁴	0.1 Ω	0.2% + 2	28 \pm 10 Ω
	10 k Ω	0.001 k Ω	0.2% + 2	0.151 \pm 0.05 k Ω
	100 k Ω	0.01 k Ω	0.2% + 2	1.38 \pm 0.5 k Ω
	1000 k Ω	0.1 k Ω	0.2% + 2	13.8 \pm 4.3 k Ω
	10 M Ω ⁵	0.001 M Ω	0.8% + 2	0.12 \pm 0.04 M Ω
	100 M Ω ^{5,6}	0.01 M Ω	1.5% + 3 (< 50 M Ω) 3.0% + 3 (> 50 M Ω)	0.12 \pm 0.04 M Ω

Specification assumptions

A. Notes for voltage specification.

- 100 mV and 600 mV range available on Temperature T1 terminal. The accuracy is specified for 10 M Ω (nominal) input impedance. The accuracy is specified after NULL function is used to zero out thermal effect (by shorting test leads on a flat surface or a null value circuit).
- Only available in U1242C only. 1.8 k Ω nominal input impedance for Z_{LOW} mode.
- Overload protection for 100 mV and 600 mV ranges: 1000 V_{rms} for circuits < 0.3 A short circuit current.
- Overload protection: 1000 V_{rms}.

B. Notes for current specification

- Current can be measured up to 440 mA continuously. Maximum of 20 hours for measuring current more than 440 mA and up to 600 mA. 100 mA and 600 mA ranges have thermal effect of 0.35 μ A/mA to be offset after current applied to these ranges. Cool down the meter for at least 6 seconds if 100 mA was applied, and at least 3 minutes if 600 mA was applied; or alternatively use the NULL function to zero-out thermal effect with open test lead before measuring the signal.
- Current can be measured up to 10 A continuously. Maximum of 30 seconds for measuring current more than 10 A to 20 A, add 0.3% to specified accuracy. The multimeter needs to be cool down after measuring current that is more than 10 A. Cool down the meter for twice the duration of the measured time and use NULL function to zero-out thermal effect before proceeding with lower current measurement.
- 1000 μ A to 600 mA ranges (connection with mA terminal) overload protection by 10 x 35 mm, 440 mA/1000 V, and 10 kA minimum fast-acting fuse.
- 10 A ranges (connection with A terminal) overload protection by 10 x 38 mm, 11 A / 1000 V, 20 kA minimum fast-acting fuse.
- Ensure good ventilation and no heat element close to the meter.

C. Notes for diode test specification

- Overload protection: 1000 V_{rms} for circuits < 0.3 A short circuit current.

2. Built-in buzzer sounds when reading is below 0.05 V approximately, and single tone for normal forward-biased diode or semiconductor junction as $0.3\text{ V} \leq \text{reading} \leq 0.8\text{ V}$.
 3. The maximum threshold voltage display is less than +2 V.
- D. Notes for resistance/audible Continuity specification
1. Maximum open voltage: < +2.4 V
 2. Built-in buzzer sounds as transient when resistance less than $28 \pm 10\ \Omega$. It may capture the intermittent for longer than 1 ms.
 3. 100 Ω range is for U1242C only
 4. The accuracy is specified after Math Null, which is used to subtract the test lead resistance and the thermal effect (by shorting the test leads tips on a flat surface or a null value circuit). Ensure good ventilation and no heat element close to the meter.
 5. For 10 M Ω and 100 M Ω ranges, the R.H. is specified for < 60% at 30 °C.
 6. For 100 M Ω range: temperature coefficient is $0.1 \times (\text{specified accuracy}) / ^\circ\text{C}$.
 7. Resistance range 100 Ω is typical characteristic.

U1240C Series AC voltage specifications

Function	Range	Resolution	Accuracy \pm (% of reading + counts of least significant digit)	
			40 Hz to 1 kHz (True RMS)	1 kHz to 2 kHz (Averaging sense) ⁶
AC voltage ^{1,4} True RMS	100 mV ²	0.01 mV	1.0% + 3	1.5% + 3
	600 mV ²	0.1 mV	1.0% + 3	1.5% + 3
	1000 mV	0.1 mV	1.0% + 3	1.5% + 3
	10 V	0.001 V	1.0% + 3	1.5% + 3
	100 V	0.01 V	1.0% + 3	1.5% + 3
	1000 V	0.1 V	1.0% + 3	1.5% + 3
	ZLOW ³ (applicable to 1000 V range)	0.1 V	2.0% + 4	N/A
AC voltage ^{1,4} Averaging sense	100 mV ²	0.01 mV	1.0% + 5	1.5% + 5
	600 mV ²	0.1 mV	1.0% + 5	1.5% + 5
	1000 mV	0.1 mV	1.0% + 5	1.5% + 5
	10 V	0.001 V	1.0% + 5	1.5% + 5
	100 V	0.01 V	1.0% + 5	1.5% + 5
	1000 V	0.1 V	1.0% + 5	1.5% + 5

Notes:

1. Overload protection: 1000 V_{rms}.
2. 100 mV and 600 mV range available on Temperature T1 terminal. The accuracy is specified for 10 M Ω (nominal) input impedance. The accuracy is specified after NULL function is used to zero out thermal effect (by shorting test leads on a flat surface or a null value circuit).
3. Only available in U1242C only. 1.8 k Ω nominal input impedance for ZLOW mode.
4. The input signal is lower than the product of 20,000,000 V x Hz.

U1240C Series AC current specifications

Function	Range	Resolution	Accuracy \pm (% of reading + counts of least significant digit)	
			40 Hz to 1 kHz (True RMS)	1 kHz to 2 kHz (Averaging sense) ⁶
AC current ⁵	1000 μ A ³	0.1 μ A	1.0% + 3	1.2% + 5
	10 mA ³	0.001 mA	1.0% + 3	1.2% + 5
	100 mA ³	0.01 mA	1.0% + 3	1.2% + 5
	1000 mA ^{1,3}	0.1 mA	1.0% + 3	1.2% + 5
	10 A ^{2,4}	0.001 A	1.2% + 5 ⁴	1.2% + 5

Notes:

1. Current can be measured up to 440 mA continuously. Maximum of 20 hours for measuring current more than 440 mA and up to 600 mA. 100 mA and 600 mA ranges have thermal effect of 0.35 μ A/mA to be offset after current applied to these ranges. Cool down the meter for at least 6 seconds if 100 mA was applied, and at least 3 minutes if 600 mA was applied; or alternatively use the NULL function to zero-out thermal effect with open test lead before measuring the signal.
2. Current can be measured up to 10 A continuously. Maximum of 30 seconds for measuring current more than 10 A to 20 A, add 0.3% to specified accuracy. The multimeter needs to be cool down after measuring current that is more than 10 A. Cool down the meter for twice the duration of the measured time and use NULL function to zero-out thermal effect before proceeding with lower current measurement.
3. 1000 μ A to 1000 mA ranges (connection with mA terminal) overload protection by 10 x 35 mm, 440 mA / 1000 V, 10 kA minimum fast-acting fuse.
4. 10 A ranges (connection with A terminal) overload protection by 10 x 38 mm, 11 A / 1000 V, 20 kA minimum fast-acting fuse.
5. Ensure good ventilation and no heat element close to the meter.
6. The averaging sense is calibrated for sine wave only. Add additional 0.05 counts / °C to accuracy from -20 °C to 18 °C or -28 °C to 55 °C.

U1240C Series temperature specifications

Thermocouple type	Range	Resolution	Accuracy \pm (% of reading + as specified below)
K	-200°C to 1372°C	0.1°C	1% + 1°C
	-328°F to 2502°F	0.1°F	1% + 1.8°F
J5	-210°C to 1200°C	0.1°C	1% + 1°C
	-346°F to 2192°F	0.1°F	1% + 1.8°F

Notes:

1. The specification above is specified after 60 minutes of warm-up time.
2. The accuracy does not include the tolerance of the thermocouple probe.
3. Do not allow the temperature sensor to contact a surface that is energized above 30 V_{rms} or 60 V DC. Such voltages pose a shock hazard.
4. The temperature calculation is specified according to the safety standards of EN/IEC-60548-1 and NIST 175.
5. Only for U1242C.

U1240C Series capacitance specifications

Range	Resolution	Accuracy \pm (% of reading + counts of least significant digit)
1000 nF	0.1 nF	1.0% + 5
10 μ F	0.001 μ F	1.0% + 5
100 μ F	0.01 μ F	1.0% + 5
1000 μ F	0.01 μ F	1.2% + 5
10 mF	0.001 mF	1.2% + 5

Notes:

1. Overload protection: 1000 V_{rms} for short circuits with < 0.3 A current.
2. The accuracy for all ranges is specified based on a film capacitor or better, and after the Null function is used to subtract the test lead resistance and thermal effect (by opening the test leads).
3. The maximum display is 12000 counts selectable.

U1240C Series frequency specifications

Range	Resolution	Accuracy \pm (% of reading + counts of least significant digit)	Minimum input frequency
100.00 Hz	0.01 Hz	0.02% + 1 ¹	0.5 Hz
1000.0 Hz	0.1 Hz	0.02% + 1	
10.000 kHz	0.001 kHz	0.02% + 1	
100.00 kHz	0.01 kHz	0.02% + 1	
1000.0 kHz	0.001 kHz	0.02% + 1	
10.000 MHz	0.001 MHz	0.02% + 1, < 1 MHz	

Note:

1. The frequency measurement is susceptible to error when measuring low-voltage, low-frequency signals. Shielding inputs from external noise pickup is critical for minimizing measurement errors. Turning on LPF (low pass filter) may help to filter out the noise and achieve a stable reading.

U1240C Series sensitivity for voltage measurement

Input range	Minimum sensitivity (RMS sine wave)		
	0.5 Hz to 20 kHz	20 kHz to 50 kHz	50 kHz to 100 kHz
Maximum input ¹ for specified accuracy			
100 mV ₂	15 mV	7.2 mV	15 mV
600 mV ₂	15 mV	7.2 mV	15 mV
1000 mV	125 mV	60 mV	125 mV
10 V	1.25 V	0.6 V	1.25 V
100 V	12.5 V	6 V	12.5 V
1000 V	60 V	60 V	60 V

U1240C Series sensitivity for current measurement

Input range Maximum input ¹ for specified accuracy	Minimum sensitivity (RMS sine wave)	
	0.5 Hz to 20 kHz	20 kHz to 30 kHz
100 μ A	175 μ A	60 μ A
10 mA	1.75 mA	0.6 mA
100 mA	17.5 mA	6.0 mA
600 mA	100 mA	38 mA
10 A	N/A	1.15 A (< 10 kHz)

Notes:

1. Refer to 'AC specification' for specified accuracy of maximum input.
2. 100 mV and 600 mV range available on Temperature T1 terminal.

U1240C Series harmonic ratio (U1242C only)

Range	Frequency	Voltage
0.0% to 99.9%	40 Hz to 1 kHz	100 mVAC to 1000 VAC

U1240C Series multimeter data refresh rate

Function	Slow (times/second)	Fast (times/second)
ACV (V or mV)	5	40
DCV (V or mV)	5	40
Ω	5	40
Diode	5	40
Auto diode	1	
Capacitance	0.8 (< 1000 μ F)	—
DC μ A, mA or A	5	40
AC μ A, mA or A	5	40
Temperature	5	40
Frequency	1 (> 10 Hz)	—

U1240B Series General Specifications

General specifications	U1240B
Display	Dual display (secondary display is intended for temperature function display only) consists of 4-digit Liquid Crystal Display (LCD) with maximum reading of 11,000 counts. Automatic polarity indication.
Power consumption	0.22 VA maximum
Battery type and life	Four single standard 1.5 V AAA batteries (Alkaline or Zinc Chloride type); 300 hours typical
Operating environment	Full accuracy at -10 to 55 °C; and to 80% RH for temperatures up to 30 °C, decreasing linearly to 50% RH at 55 °C 0 – 2000 meters per IEC 61010-1 3rd edition CAT III, 1000 V/CAT IV, 600 V IEC 61010-1 3rd edition
Storage compliance	-20 to 70°C
Measurement category	CAT III 1000 V/CAT IV 600 V Overvoltage Protection, Pollution Degree 2
Safety & EMC compliance	Refer to Declaration of Conformity for the latest revisions of regulatory compliance at: www.keysight.com/go/conformity Commercial limits compliance with EN61326-1 Influence of radiated immunity: In RF electromagnetic fields of 3 V/M DC voltage measurement typical accuracy: 1000 mV to 1000 V range; $\pm 0.2\%$ of range DC current measurement typical accuracy: 1000 μ A & 10000 μ A range; $\pm 0.7\%$ of range 100 mA range; $\pm 0.22\%$ of range 440 mA range; $\pm 0.5\%$ of range 10 A range; $\pm 0.11\%$ of range Note: If used in close proximity to an RF transmitter or when subjected to continuously present electromagnetic phenomena, some recoverable degradation of performance may occur.
Common mode rejection ratio (CMRR)	> 90 dB at DC, 50/60 Hz $\pm 0.1\%$ (1 k Ω unbalanced)
Normal mode rejection ratio (NMRR)	> 60 dB at 50/60 Hz $\pm 0.1\%$
Crest factor	Crest factor ≤ 3 at full-scale and decrease reciprocally for overrange as $3 \times$ Full Scale/Input; except for the 1000 V range, where this range has crest factor ≤ 1.5 at full scale and decrease reciprocally for overrange as $1.5 \times$ Full Scale/Input.
Temperature coefficient	$0.1 \times (\text{specified accuracy})/^{\circ}\text{C}$ (from -10 to 18 °C or 28 to 55 °C)
Shock and vibration	Tested to IEC/EN 60068-2
Dimensions (H x W x D)	193.8 x 92.2 x 58.0 mm
Weight	450 g with batteries 400 g without batteries
Warranty	Three years for main unit. Three months for standard shipped accessories

U1240B Series DC specifications

Function	Range	Resolution	Test current/burden voltage	Accuracy \pm (% of reading + counts of least significant digit)
Voltage ¹	1000.0 mV	0.1 mV	—	0.09% + 5
	10.000 V	0.001 V	—	0.09% + 2
	100.00 V	0.01 V	—	
	1000.0 V	0.1 V	—	0.15% + 5
Current	1000.0 μ A	0.1 μ A	< 0.06 V (50 Ω)	0.1% + 3
	10000 μ A	1 μ A	< 0.55 V (50 Ω)	0.1% + 3
	100.00 mA	0.01 mA	< 0.18 V (0.5 Ω)	0.2% + 3
	440.0 mA ²	0.1 mA	< 0.8 V (0.5 Ω)	0.5% + 3
	10.000 A ³	0.001 A	< 0.4 V (0.01 Ω)	0.6% + 5
Resistance ⁴	1000.0 Ω ⁵	0.1 Ω	0.5 mA	0.3% + 3
	10.000 k Ω ⁵	0.001 k Ω	50 μ A	
	100.00 k Ω	0.01 k Ω	4.91 μ A	
	1000.0 k Ω	0.1 k Ω	447 nA	0.8% + 3
	10.000 M Ω	0.001 M Ω	112 nA	
	100.00 M Ω ⁶	0.01 M Ω	112 nA	1.5% + 3
Diode test ⁷	1 V	0.001 V	approximately 0.5 mA	0.3% + 2

Notes:

1. Input impedance: 10 M Ω (nominal).
2. Current can be measured up to 440 mA continuously. An additional 0.2% needs to be added to the specified accuracy if the signal measured is in the range of 440 mA to 1100 mA for 30 seconds maximum. After measuring a current of > 440 mA, leave the meter to cool down for twice the measuring time used before applying a low current measurement.
3. Current can be measured up to 10 A continuously with a maximum operating temperature of 50 °C. An additional 0.3% needs to be added to the specified accuracy if the signal measured is in the range of 10 A to 19.999 A for 15 seconds maximum. After measuring a current of > 10 A, leave the meter to cool down for 60 seconds before applying a low current measurement.
4. The maximum open voltage is < 2.8 V. For instant continuity, the built-in buzzer sounds when resistance is < 10.0 Ω .
5. The accuracy of 1 k Ω and 10 k Ω is specified after Null function, which is used to substrate the test lead resistance and the thermal effect.
6. For the range of 100 M Ω , the R.H. is specified for < 60%. The temperature coefficient will be 0.15 times of specified accuracy as > 50 M Ω .
7. Overload protection: 1000 V RMS for circuits < 0.3 A short circuit current. The built-in buzzer sounds when reading is approximately below 50 mV and audible single tone for normal forward biased diode or semiconductor junction as $0.3 \text{ V} \leq \text{Reading} \leq 0.8 \text{ V}$.

U1240B Series AC specifications

Function`	Range	Resolution	Test current/burden voltage	Accuracy \pm (% of reading + counts of least significant digit)		
				40 to 500 Hz	500 Hz to 1 kHz	1 to 2 kHz
AC voltage ^{1,5} True RMS	1000.0 mV	0.1 mV	—	1% + 5	2% + 5	—
	10.000 V	0.001 V	—	1% + 5	1% + 5	2% + 5
	100.00 V	0.01 V	—	1% + 5	1% + 5	2% + 5
	1000.0 V	0.1 V	—	1% + 5	1% + 5	—
AC current ^{2,5} True RMS	1000.0 μ A	0.1 μ A	< 0.06 V (50 Ω)	1% + 5	1% + 5	—
	10000 μ A	1 μ A	< 0.55 V (50 Ω)			
	100.00 mA	0.01 mA	< 0.18 V (0.5 Ω)			
	440.0 mA ³	0.1 mA	< 0.8 V (0.5 Ω)			
	10.000 A ⁴	0.001 A	< 0.4 V (0.01 Ω)			

Notes:

1. Input impedance: 10 M Ω (nominal) in parallel with < 100 pF, with overload protection of 1000 V RMS.
2. Crest factor ≤ 3 at full-scale and decrease reciprocally for overrange as 3 \times Full Scale/Input; except for the 1000 V range, where this range has crest factor ≤ 1.5 at full scale and decrease reciprocally for overrange as 1.5 \times Full Scale/Input. For non-sinusoidal waveforms, add (2% of reading + 2% of full scale) typical.
3. Current can be measured from 50 mA to 440 mA continuously. An additional 0.2% needs to be added to the specified accuracy if the signal measured is in the range of 440 mA to 1100 mA for 30 seconds maximum. After measuring a current of > 440 mA, leave the meter to cool down for twice the measuring time used before application of low current measurement.
4. Current can be measured from 0.5 A up to 10 A continuously with a maximum operating temperature of 50 $^{\circ}$ C. An additional 0.3% needs to be added to the specified accuracy if the signal measured is in the range of 10 A to 19.999 A for 15 seconds maximum. After measuring a current of >10 A, leave the meter to cool down for 60 seconds before applying a low current measurement.
5. AC voltage and AC current specifications are AC coupled. True RMS measurement is valid from 5% of range to 100% of range.

U1240B Series temperature specifications

Thermocouple type	Range	Resolution	Accuracy \pm (% of reading + offset error)
K (for U1241B and U1242B)	–40 to 1000 $^{\circ}$ C/–48 to 1832 $^{\circ}$ F	0.1 $^{\circ}$ C /0.1 $^{\circ}$ F	1% + 1 $^{\circ}$ C/1% + 1.8 $^{\circ}$ F
J (for U1242B only)	–40 to 1000 $^{\circ}$ C/–48 to 1832 $^{\circ}$ F	0.1 $^{\circ}$ C/0.1 $^{\circ}$ F	1% + 1 $^{\circ}$ C/1% + 1.8 $^{\circ}$ F

U1240B Series capacitance specifications

Range	Resolution	Accuracy \pm (% of reading + counts of least significant digit)
1000.0 nF	0.1 nF	1.2% + 4
10.000 μ F	0.001 μ F	
100.00 μ F	0.01 μ F	
1000.0 μ F	0.1 μ F	2% + 4
10.000 mF	0.001 mF	

U1240B Series harmonic ratio specifications

Range	Frequency	Voltage
0.0% to 99.9%	40 to 500 Hz	100 mVAC to 1000 VAC

U1240B Series switch counter definition

Switch condition ^{1,2}	Circuit switch	Display ³	Switch threshold
Low level	Normally close	Lo	< 370 ohms
Intermittent ⁴	Close to open	Number of switch count	Low to high transition
High level	Normally open	Hi	> 430 ohms
Intermittent ⁵	Open to close	Number of switch count	High to low transition

Notes:

1. Detects intermittent Opens or Closes lasting for at least 250 μ sec.
2. Test current of 0.5 mA with maximum open circuit voltage of 2.8 V is used.
3. Maximum count reading: 199.99 M (display "OL" when achieving 2×10^8 and thereafter).
4. Count only low to high transition for initial switch condition of Low.
5. Count only high to low transition for initial switch condition of High.

U1240B Series frequency specifications

Range	Resolution	Accuracy	Minimum input frequency
100.00 Hz	0.01 Hz	0.03% + 3	1 Hz
1000.0 Hz	0.1 Hz		
10.000 kHz	0.001 kHz		
100.00 kHz	0.01 kHz		
1000.0 kHz ¹	0.1 kHz		

Note:

1. Effective frequency measurement of up to 200 kHz; refer to frequency sensitivity table below for details.

U1240B Series frequency sensitivity during voltage measurement

Input range (Maximum input for specified accuracy = 10 x Range or 1000 V)	Minimum sensitivity (RMS sine wave)	
	20 Hz to 50 kHz	50 to 200 kHz
1000.0 mV	0.3 V	0.6 V
10.000 V	0.5 V	1.8 V
100.00 V	5 V	10 V (< 100 kHz)
1000.0 V	50 V	100 V (< 100 kHz)

U1240B Series frequency sensitivity during current measurement

Input range	Minimum sensitivity (RMS sine wave)	
	20 Hz to 20 kHz	
1000.0 μ A	100 μ A	
10000 μ A	500 μ A	
100.00 mA	10 mA	
440.00 mA	50 mA	
10.000 A	1 A	

U1240B Series measuring rate

Function	Times/second
ACV	7
DCV (V or mV)	7
Ω	14
Diode	14
Capacitance	4 (< 100 μ F)
DCA (μ A, mA, A)	7
ACA (μ A, mA, A)	7
Temperature	7 (single)
Frequency	1 (> 10 Hz)

Optional accessories

U1179A IR connectivity bracket
Connects the U1240B Series handheld DMM to the IR-to-USB cable

Images



U1171A magnetic hanging kit
For fastening the DMM to a steel surface so both hands are free



U1174A carrying case, soft
For handheld digital multimeters



U1172A transit case (aluminium-clad)
The robust casing to transport your DMM and accessories
Aluminium-clad, black panel construction
Dimension: 18 inches (H) x 13 inches (W) x 6 inches (D)
Weight: 4 kg



U1595A rugged carrying case
High quality, water and dust proof carrying case designed to store up to two handheld and accessories



U1161A extended test lead kit
Includes two test leads (red and black), two test probes, medium sized alligator clips and 4-mm banana plugs.
Test leads: CAT III 1000 V, CAT IV 600 V, 15 A
Test probe (4-mm tips): CAT III 1000 V, CAT IV 600 V, 15 A
Medium-sized alligator clips: CAT III 1000 V, CAT IV 600 V, 15 A
4-mm banana plugs: CAT II 600 V, 10 A



Optional accessories

Images

U1168B standard test lead kit

Includes two test leads (red and black), 4-mm test probes, alligator clips, fine-tip test probes, SMT grabbers and mini grabbers.

Test leads: CAT III 1000 V, CAT IV 600 V, 15 A

Test probe (19-mm tips): CAT II 1000 V, 15 A

Test probe (4-mm tips): CAT III 1000 V, CAT IV 600 V, 15 A (highly recommended for CAT IV environment)

Alligator clips: CAT III 1000 V, CAT IV 600 V, 15 A

Fine-tip test probes: CAT II 300 V, 3 A

SMT grabber: CAT II 300 V, 3 A

Mini grabber: CAT II 300 V, 3 A



U1162A alligator clips

One pair of insulated alligator clips (red and black). Recommended for use with Keysight standard test leads.

Rated CAT III 1000 V, CAT IV 600 V, 15 A



U1163A SMT grabbers

One pair of SMT grabbers (red and black). Recommended for use with Keysight standard test leads.

Rated CAT II 300 V, 3 A



U1164A fine-tip test probes

One pair of fine-tip test probes (red and black). Recommended for use with Keysight standard test leads.

Rated CAT II 300 V, 3 A



U1169A test probe leads

Includes two test leads (red and black), and a pair each of 19-mm and 4-mm test probes.

Test leads: CAT III 1000 V, CAT IV 600 V, 15 A

Test probes (19-mm tip): CAT II 1000 V, 15 A

Test probes (4-mm tip): CAT III 1000 V, CAT IV 600 V, 15 A (highly recommended for CAT IV environment)



U1180A temperature sensors and probes

Includes thermocouple adapter, thermocouple bead J-type and thermocouple bead K-type.

T/C adapter J/K type

T/C bead J-type: -20 to 200 °C

T/C bead K-type: -20 to 200 °C



U1181A immersion temperature probe

Type K T/C for use in oil and other liquids

Measurement range: -50 to 700 °C

Includes adapter U1184A for connection to DMM



Optional accessories

Images

U1182A industrial surface temperature probe
Type K T/C for use on still surfaces
Measurement range: -50 to 400 °C
Includes adapter U1184A for connection to DMM



U1183A air temperature probe
Type K T/C for use in air and non-caustic gas
Measurement range: -50 to 800 °C
Includes adapter U1184A for connection to DMM



U1184A temperature probe adapter
Mini-connector-to-banana-plug adapter for use with DMM



U1185A thermocouple (J-type) and temperature probe adapter
T/C adapter J/K type
T/C bead J-type: -20 to 200 °C



U1186A thermocouple (K-type) and temperature probe adapter
T/C adapter J/K type
T/C bead J-type: -20 to 200 °C

